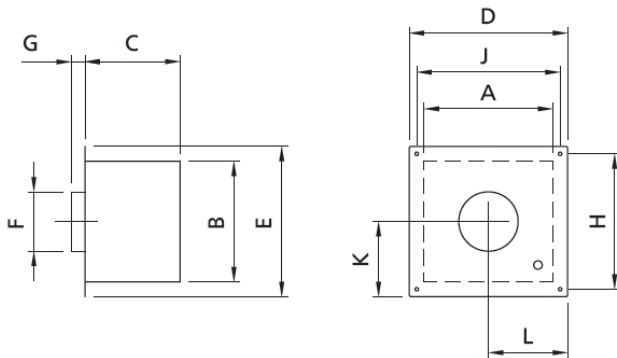


| A   | B   | C   | D   | E   | ∅ F <sub>outside</sub> | G  | H   | J   | K   | L   |
|-----|-----|-----|-----|-----|------------------------|----|-----|-----|-----|-----|
| 325 | 310 | 240 | 400 | 380 | 146                    | 35 | 340 | 360 | 181 | 186 |

Unit of measure: mm

Hekon art. : EXH-RSG150

## Technical data

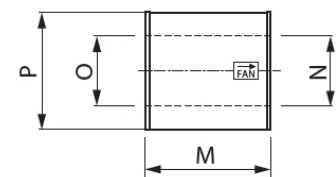


| Model      | Motorspecification |       |     |      | Weight<br>kg | Dimensions in mm |     |     |     |     |              |    |     |     |     |     |
|------------|--------------------|-------|-----|------|--------------|------------------|-----|-----|-----|-----|--------------|----|-----|-----|-----|-----|
|            | RPM                | V     | Amp | kW*  |              | A                | B   | C   | D   | E   | F<br>outside | G  | H   | J   | K   | L   |
| RSG125-4-1 | 1400               | 1x230 | 0.3 | 0,04 | 11           | 265              | 250 | 220 | 336 | 320 | ø121         | 35 | 280 | 296 | 153 | 157 |
| RSG150-4-1 | 1400               | 1x230 | 0.2 | 0,05 | 14           | 325              | 310 | 240 | 400 | 380 | ø146         | 35 | 340 | 360 | 181 | 186 |
| RSG200-4-1 | 1400               | 1x230 | 0.4 | 0,11 | 20           | 405              | 380 | 275 | 478 | 453 | ø196         | 35 | 413 | 438 | 215 | 221 |
| RSG250-4-1 | 1400               | 1x230 | 0.8 | 0,14 | 31           | 522              | 482 | 338 | 600 | 560 | ø247         | 60 | 516 | 556 | 271 | 279 |

\*Effect at the motor shaft at ambient temperature: 20 °C. RPM is infinitely adjustable for all 1x230 V motors  
The motor is overload protected: Motor protection class IP 54, Insulation class F

### Silencer SLR (install accessory)

| Type       | M   | N Ø inside | O Ø inside | P Ø |
|------------|-----|------------|------------|-----|
| SLR125-280 | 280 | 128        | 125        | 240 |
| SLR150-280 | 280 | 153        | 150        | 265 |
| SLR200-280 | 280 | 206        | 203        | 318 |
| SLR200-600 | 600 | 206        | 203        | 318 |
| SLR250-280 | 280 | 256        | 253        | 370 |
| SLR250-600 | 600 | 256        | 253        | 370 |



## Capacity diagrams

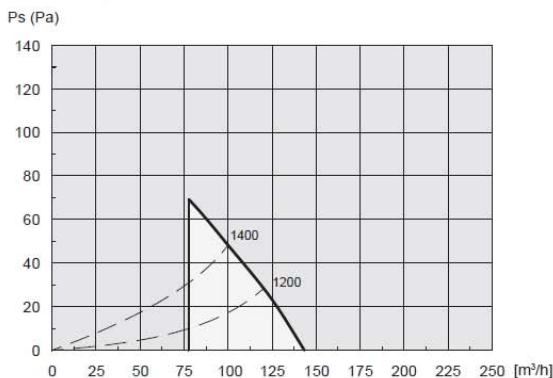
The outlet grill can be adjusted in order to enable the RSG to work with low fan speed and still have the fail-safe system working.

Low fan speed range – min. outlet / High fan speed range – max. outlet

Not an option on RSG250

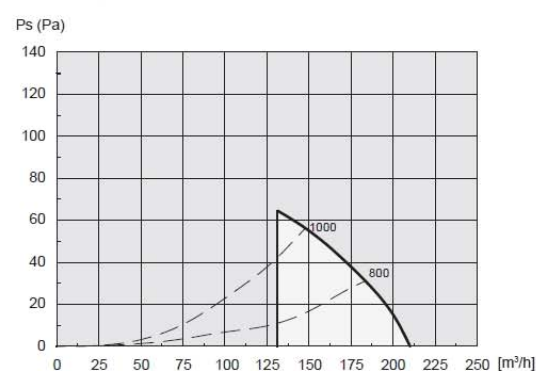
### RSG 125

Capacity with minimum outlet



### RSG 125

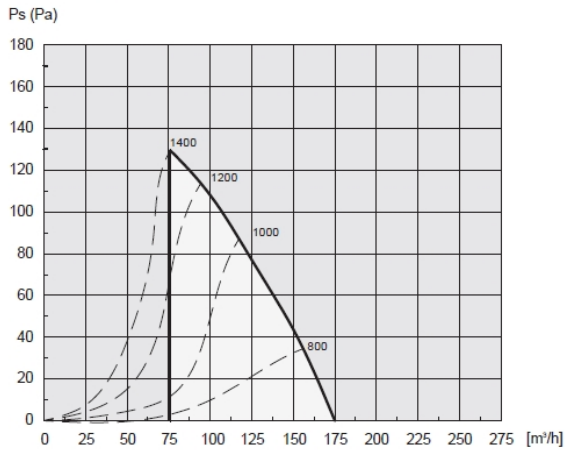
Capacity with maximum outlet



Hekon art. : EXH-RSG150

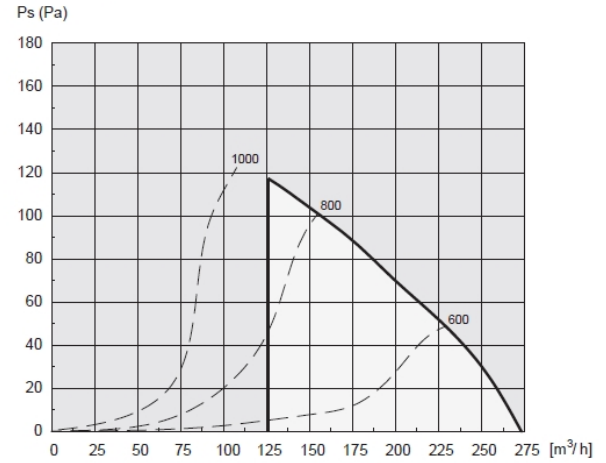
## RSG 150

Capacity with minimum outlet



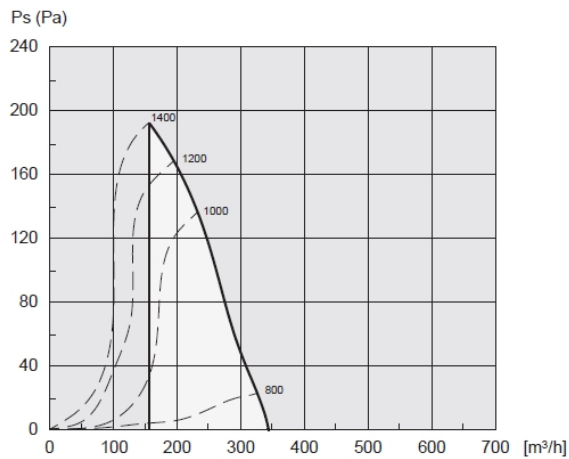
## RSG 150

Capacity with maximum outlet



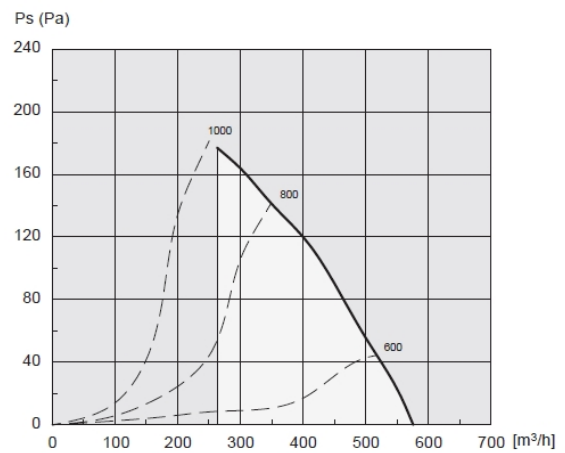
## RSG 200

Capacity with minimum outlet



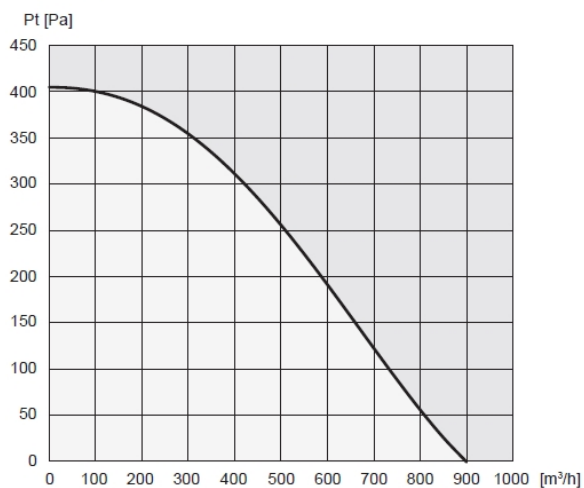
## RSG 200

Capacity with maximum outlet



## RSG 250

Capacity



Hekon art. : EXH-RSG150

The capacity chart is measured at a flue gas temperature of 20 °C. The fan capacity changes with temperature. Correction of system pressure loss for flue gas temperature higher than 20 °C is calculated:

$$P_{s_{20}} = P_{s_t} \times \left( \frac{273 + t(^{\circ}\text{C})}{293} \right)^t$$

t = temperature measured in °C

### Example

System need: 300 m<sup>3</sup>/h and 90 Pa at 180 °C

Selection of fan: 300 m<sup>3</sup>/h and 139 Pa at 20 °C

## Sound data

Soundpower levels to flue pipe. Measured in accordance to ISO 5136

| Model  | Lw (dB) |        |        |         |         |         |         | Lp<br>dB (A) |
|--------|---------|--------|--------|---------|---------|---------|---------|--------------|
|        | 125 Hz  | 250 Hz | 500 Hz | 1000 Hz | 2000 Hz | 4000 Hz | 8000 Hz |              |
| RSG125 | 60      | 59     | 56     | 50      | 49      | 42      | 34      | 49           |
| RSG150 | 61      | 66     | 61     | 56      | 53      | 47      | 40      | 55           |
| RSG200 | 69      | 72     | 68     | 62      | 59      | 55      | 49      | 61           |
| RSG250 | 78      | 71     | 62     | 57      | 52      | 50      | 51      | 63           |

Soundpower levels to external surroundings. Measured in accordance to ISO 3744

| Model      | Lw (dB) |        |        |         |         |         |         | Lw<br>dB (A) | Lp<br>dB (A) |
|------------|---------|--------|--------|---------|---------|---------|---------|--------------|--------------|
|            | 125 Hz  | 250 Hz | 500 Hz | 1000 Hz | 2000 Hz | 4000 Hz | 8000 Hz |              |              |
| RSG125-4-1 | 66      | 59     | 48     | 44      | 40      | 30      | 21      | 54           | 29           |
| RSG150-4-1 | 75      | 67     | 52     | 50      | 44      | 36      | 29      | 61           | 35           |
| RSG200-4-1 | 80      | 69     | 59     | 56      | 51      | 45      | 36      | 66           | 41           |
| RSG250-4-1 | 71      | 72     | 67     | 61      | 61      | 62      | 60      | 70           | 42           |

Sound absorbed using silencer SLR (Lw to flue pipe)

| Model      | Lw (dB) |        |        |         |         |         |         |
|------------|---------|--------|--------|---------|---------|---------|---------|
|            | 125 Hz  | 250 Hz | 500 Hz | 1000 Hz | 2000 Hz | 4000 Hz | 8000 Hz |
| SLR125-280 | 4       | 6      | 11     | 21      | 18      | 12      | 12      |
| SLR150-280 | 2       | 4      | 11     | 19      | 14      | 14      | 9       |
| SLR200-280 | 1       | 2      | 10     | 16      | 12      | 12      | 7       |
| SLR250-280 | 1       | 1      | 6      | 14      | 5       | 5       | 4       |

Tolerance +/-3 db

Lw = Sound effect level dB. (reference: 1 pW)

Lp = Sound Pressure level dB (A) at a distance of 10 m from the fan at halfspheric sound distribution.

Lp (2 metres) = Lp (1 metre) - 6 dB.

Hekon art. : EXH-RSG150