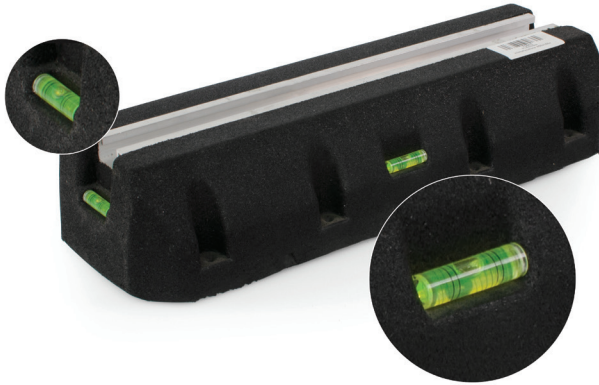


FLOOR BASES / SUPPORTS FOR HEAVY LOADS, IN BLACK RUBBER



Our bases/supports for heavy loads can support pipe-work and cable trays. Bases can be also used to mount air conditioning units, heat pumps or variety of other outdoor units.

In case of flat roof, base can also be used for solar thermal and solar photovoltaic installations.

- Available sizes : 450mm – 600mm – 1000mm.
- Made from heavy duty recycled rubber.
- With drainage slots, at the bottom of the base.
- With double balance bubble, for perfect adjustment and leveling.
- Length according to the actual size, width 40 (mm)
- Height 28 (mm) aluminum strut is supplied bonded to the rubber.
- Drain slots molded to the underside of the foot.

	Material
Rubber	Compression moulded using milled, sieved and graded recycled rubber, bound with high quality adhesive.
Density	1.0 kg /cm ³
Alu Strut	Length : See the table below – Width : 40mm – Height : 28mm

	Length	Width	Height	Length of strut	Weight/set	Max load (*)	Box size
A	450mm	160mm	90mm	408mm	8.5kg	400kg	46x33.5x10cm
B	600mm	160mm	90mm	555mm	12.5kg	500kg	61x33.5x10cm
C	1000mm	160mm	90mm	958mm	20.5kg	800kg	101x33.5x10cm

(*) The maximum load quoted in the above table is based on loads applied over the top surface and have been tested with a 4:1 safety ratio.