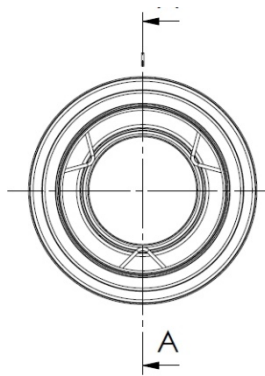
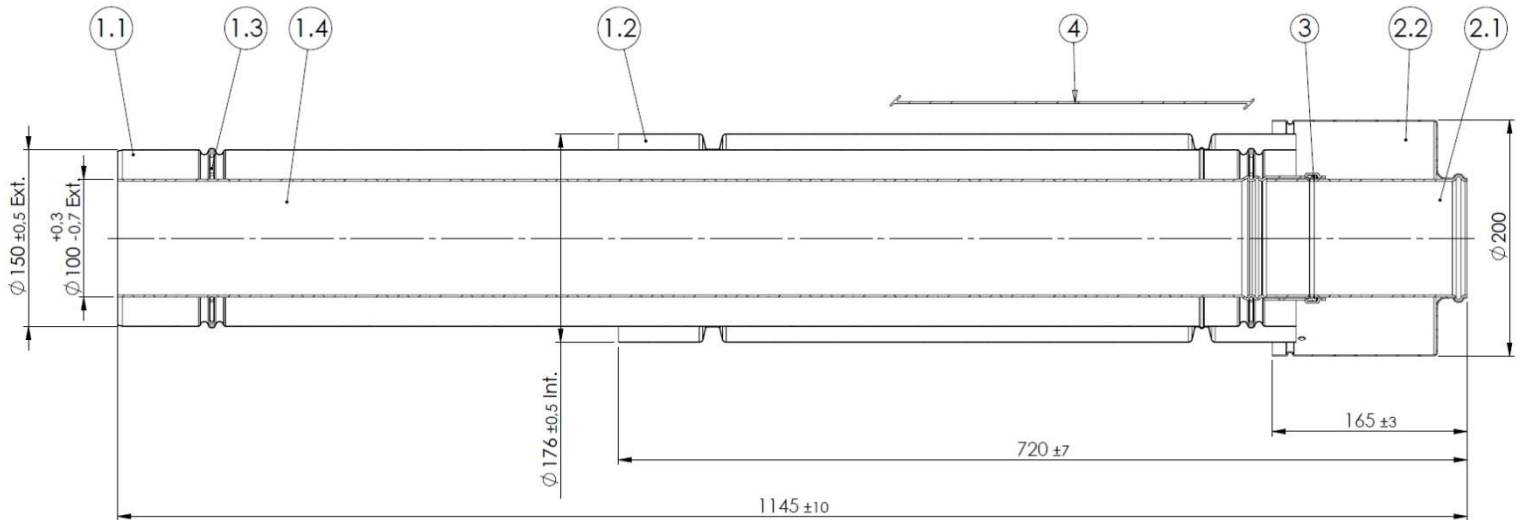


SECTION A-A



| Pos. | Qty. | Description | Material |
|------|------|-----------------------|---------------|
| 1 | 1 | Roof terminal 100-150 | N/A |
| 1.1 | 1 | Air-inlet pipe ø150 | DX52D+Z275-NA |
| 1.2 | 1 | Pipe ø176 | DX52D+Z275-NA |
| 1.3 | 2 | Spring | 1,4310 |
| 1.4 | 1 | Flue Pipe | EN-AW-6060 |
| 2 | 1 | Cap 100 | N/A |
| 2.1 | 1 | Flue pipe | EN-AW-6060 |
| 2.2 | 1 | Cap | EN-AW-1050A |
| 3 | 1 | Seal ø100 | Silicone |
| 4 | 1 | Plastic cord | PA Type 6 |

Hekon art. : GR100/150ADC